



# Visual Art Virtual Learning

Art Explorations- Georgia O'Keeffe

April 20, 2020



# Art Explorations

LESSON: April 20, 2020

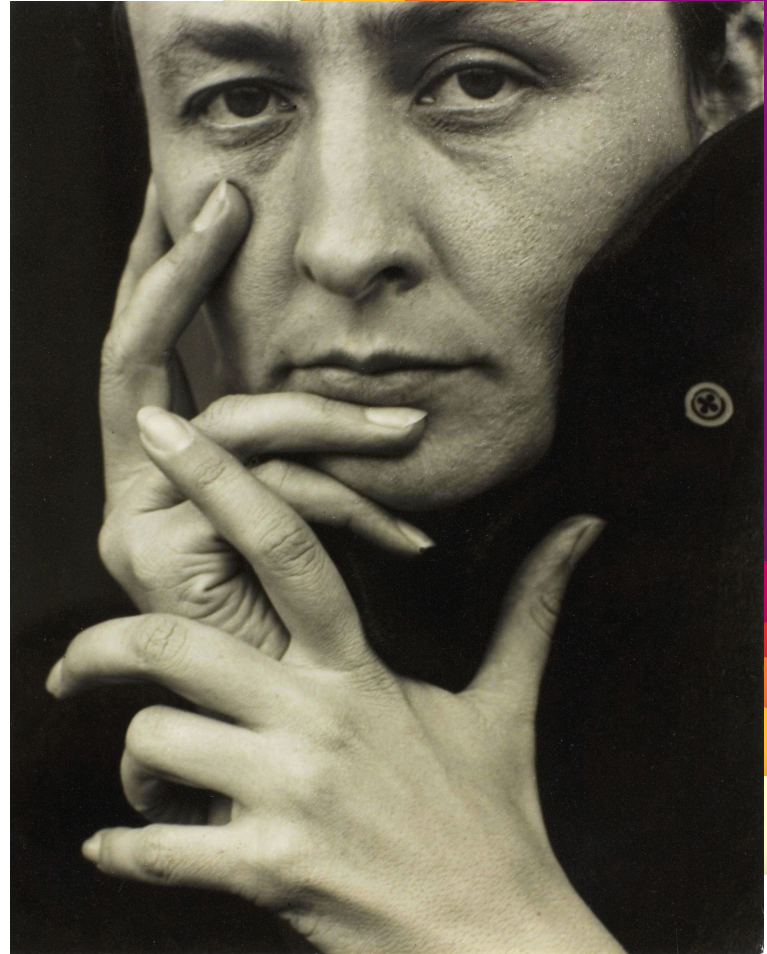
**Objective/Learning Target: To introduce the artist Georgia O'Keeffe and learn her style of artwork.**

**Who is  
Georgia  
O'Keeffe?**



# Georgia O'Keeffe

- Georgia was born on a dairy farm in Sun Prairie, Wisconsin on November 15, 1887
- Living on the farm she was surrounded by nature and started her interest in painting at the young age of 6.
- She studied art at the Art Institute of Chicago. There she felt constrained by what her instructors were teaching her. She decided to focus back on nature and became famous for her enlarged flowers.
- She died in 1986 at the age of 98.



## Her early works:



Georgia painted this at just 6 years old.



Georgia painted this at 18 years of age.



Georgia painted this at 22 years of age.



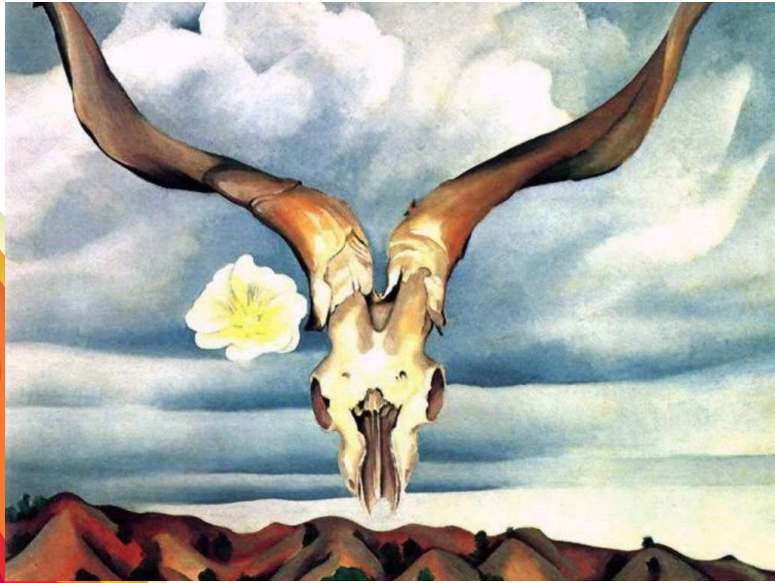
**This is one of Georgia's most famous pieces it is called:**

**Jimson Weed painted in 1936. It sold for \$44 million. It is the most expensive painting that was created by a woman.**

**It hung in the white house for 6 years by request of First Lady Laura Bush.**

**Though it appears to be a beautiful flower, Jimson Weed has a foul smell to it and was used to poison people.**

Though Georgia is best known for her enlarged flowers, she also was famous for her southwest paintings (which we will focus on) and New York skylines. Here are some of her other paintings.



**Georgia visited the southwest in 1926.. She was enchanted with colors and landscapes of New Mexico. By the 1940's she purchased two homes in that state and made it her permanent home.**





Watch these videos to learn more about Georgia O'Keeffe and her love for the southwest.

[https://www.youtube.com/watch?v=\\_CSibQcq5BA](https://www.youtube.com/watch?v=_CSibQcq5BA)

[https://www.youtube.com/watch?v=DXtBXqkj1U0&list=PL6ERII mFLT3fbyUv0ukJDpe\\_3G\\_IFLgxY&index=4&t=41s](https://www.youtube.com/watch?v=DXtBXqkj1U0&list=PL6ERII mFLT3fbyUv0ukJDpe_3G_IFLgxY&index=4&t=41s)



“

Tomorrow we will focus more on her southwest style as well as other aspects of the southwest region.

# HOW TO SHOW US YOUR CREATIONS...

*BE BOLD, BE SAFE, and  
TAKE CARE OF YOU!*

*All the best,  
Ms. Bown*

We'd love to see  
your work!!!

Email your art teacher and  
be sure to tag your  
principal as well.

[shannon\\_bown@idschools.org](mailto:shannon_bown@idschools.org)